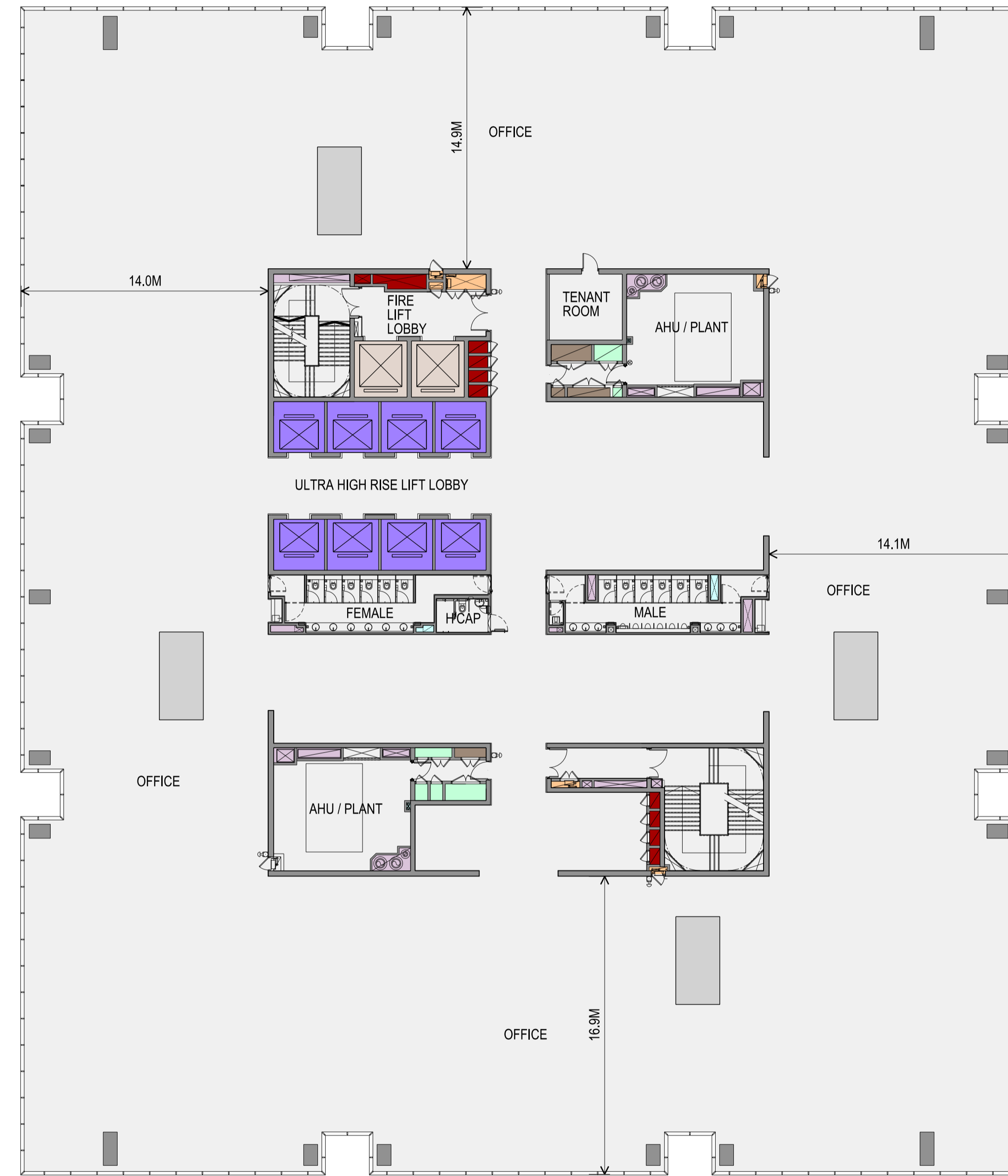




ASIA SQUARE TOWER 1
 TYPICAL HIGH RISE
 APPROXIMATELY 34,100 SQUARE FEET

HYDRAULIC ELECTRICAL MECHANICAL COMMUNICATION SYSTEMS FIRE SYSTEMS PASSENGER LIFTS GOODS / FIRE LIFTS TENNANT SPARE RISER KNOCK OUT-PANEL PROVISION



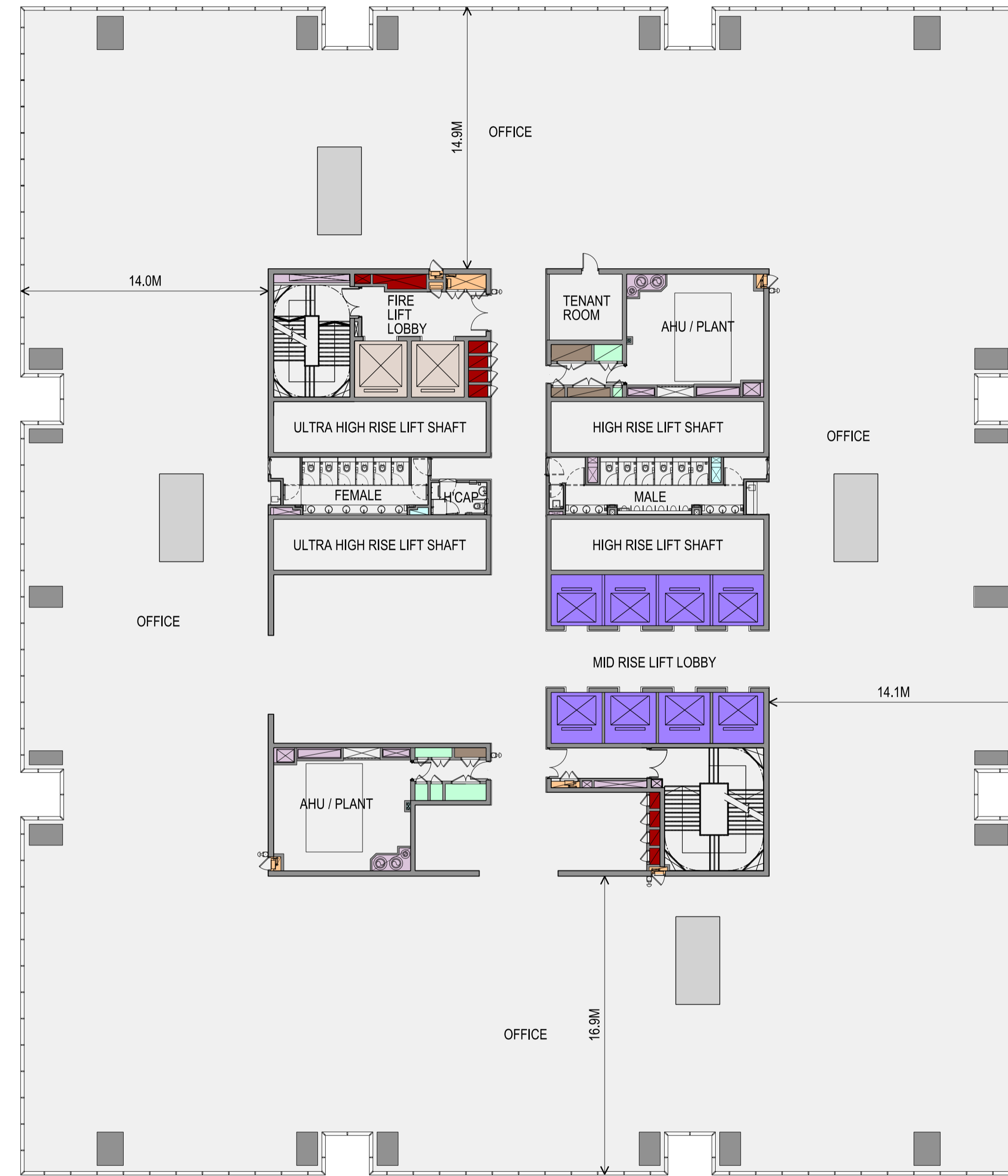
ASIA SQUARE TOWER 1
 TYPICAL ULTRA HIGH RISE
 APPROXIMATELY 35,000 SQUARE FEET

HYDRAULIC ELECTRICAL MECHANICAL COMMUNICATION SYSTEMS FIRE SYSTEMS PASSENGER LIFTS GOODS / FIRE LIFTS TENNANT SPARE RISER KNOCK OUT-PANEL PROVISION



ASIA SQUARE TOWER 1
 TYPICAL LOW RISE
 APPROXIMATELY 32,350 SQUARE FEET

HYDRAULIC ELECTRICAL MECHANICAL COMMUNICATION SYSTEMS FIRE SYSTEMS PASSENGER LIFTS GOODS / FIRE LIFTS TENNANT SPARE RISER KNOCK OUT-PANEL PROVISION

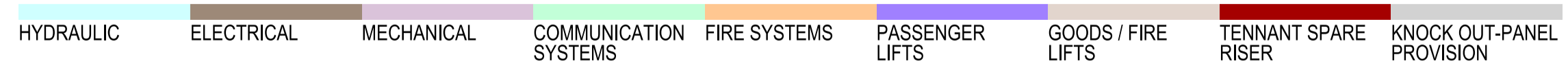


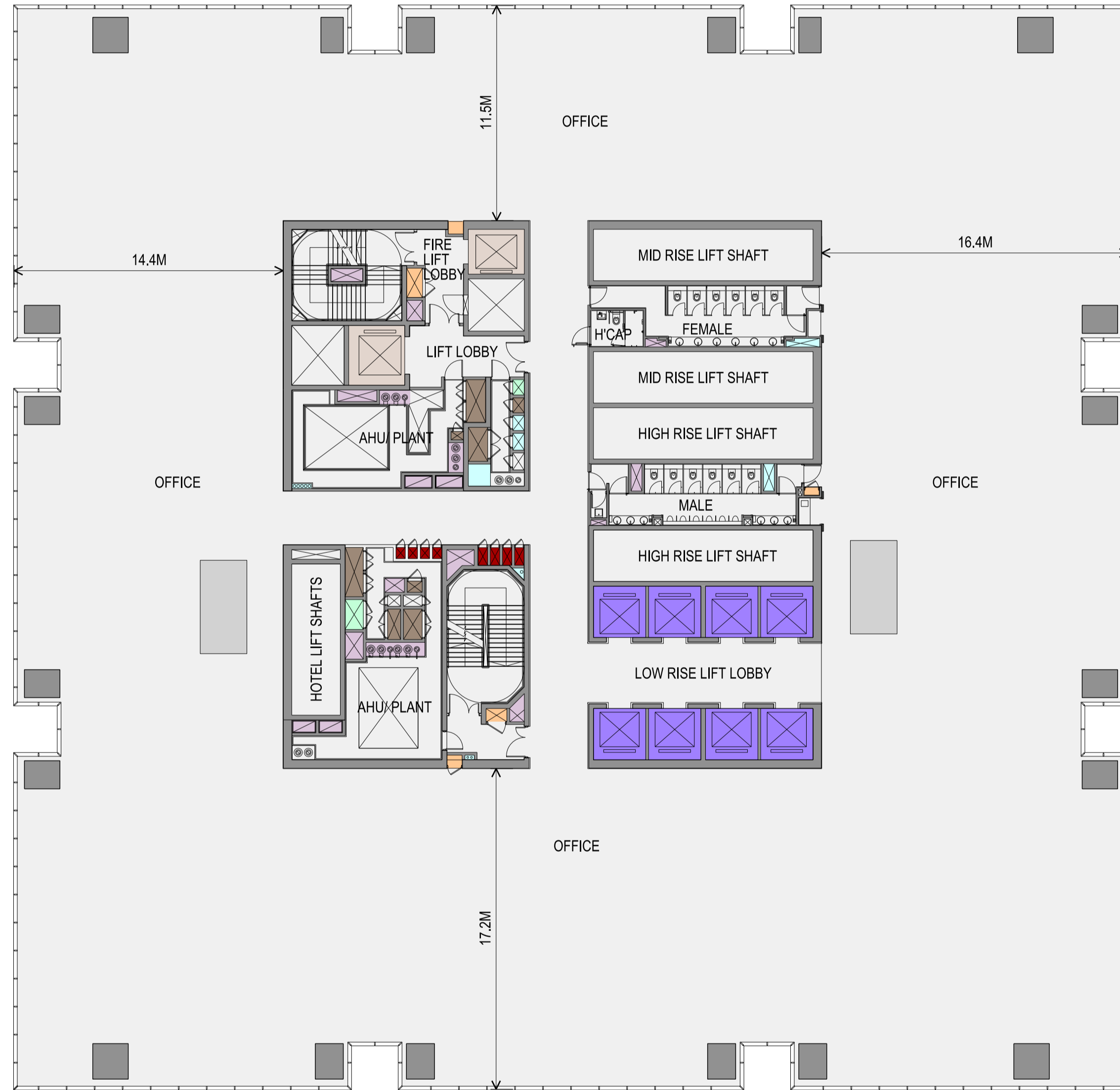
ASIA SQUARE TOWER 1
 TYPICAL MID RISE
 APPROXIMATELY 33,300 SQUARE FEET

HYDRAULIC ELECTRICAL MECHANICAL COMMUNICATION SYSTEMS FIRE SYSTEMS PASSENGER LIFTS GOODS / FIRE LIFTS TENNANT SPARE RISER KNOCK OUT-PANEL PROVISION

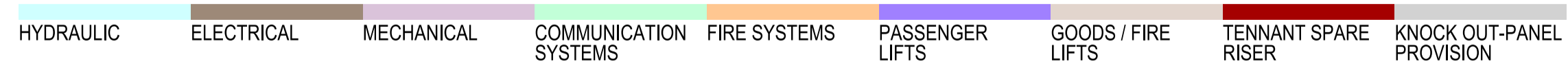


ASIA SQUARE TOWER 2
 TYPICAL HIGH RISE
 APPROXIMATELY 31,300 SQUARE FEET





ASIA SQUARE TOWER 2
 TYPICAL LOW RISE
 APPROXIMATELY 29,700 SQUARE FEET



ASIA SQUARE TOWER 2
 TYPICAL MID RISE
 APPROXIMATELY 30,500 SQUARE FEET

